

FMB10184 – Fast Patrol/Support Craft (Hull Only)



Description

Scirocco 50 hull is extensively used for luxury motor yachts, ambulances, and workboats operating off the exposed Norwegian coastline. The Scirocco 50 hull sturdily built in sandwich FRP in appliance with the stringent rules of Det Norske Veritas, and has a proven track record of seaworthiness and operational capacities in the most adverse weather conditions.

In the patrol version features a half deck wheelhouse with 360° visibility and good access to deck and engine compartment.

The wheelhouse layout comprises of 3 forward facing damped sets, one fitted pilot console, one navigation workstation and bench seating for 6 persons. The vast deck area makes a versatile work platform for multiple operations. Both the engine room and the cargo area have 2.0 m headroom.

The hull was fitted with Yellowfin VSD CP surface drives with proven and unrivalled low-speed control and manoeuvrability characteristics, the combination of the



0044 (0)1273 508164

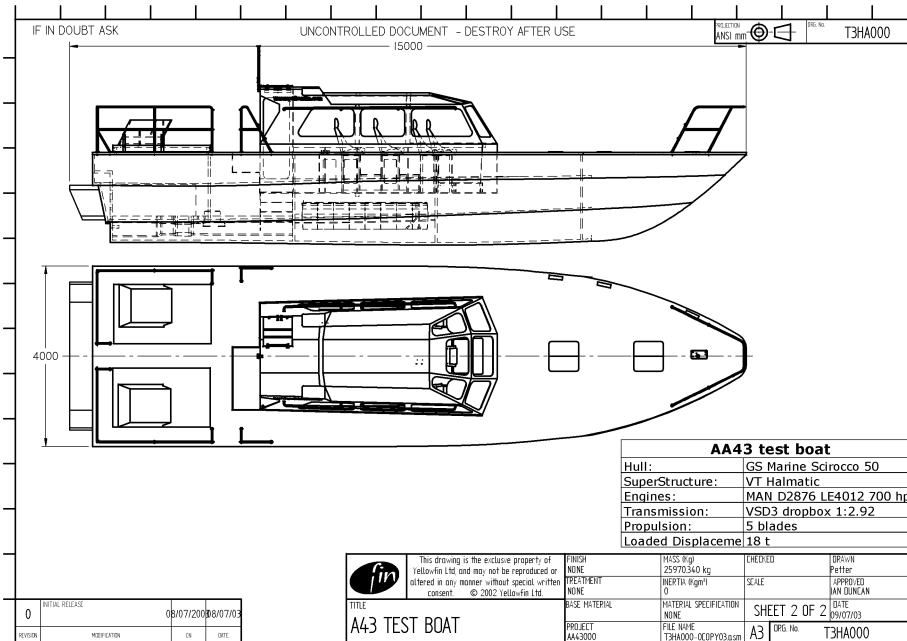
0044 (0)7710 112765

info@fairwaysmarinebrokerage.co.uk

www.fairwaysmarinebrokerage.co.uk

performance of the VSD CP surface drives and the durability of the two turbo charged MAN diesel engines made this an ideal high-speed pursuit craft. The hull is well suited to the fitment of aft engines of 500-700hp with V-drive gearboxes

Hull Layout Drawing

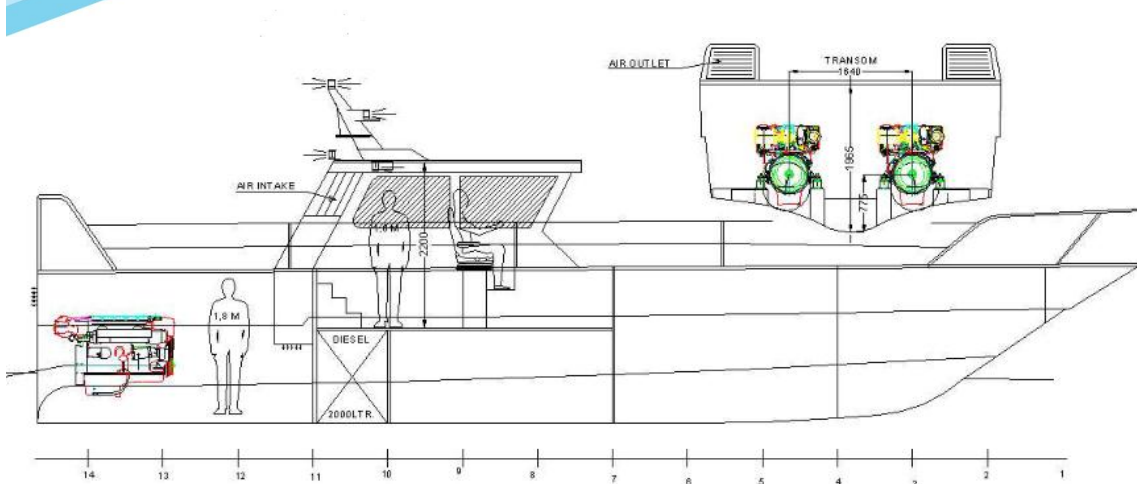


Functions

Fast Harbour Master Launch
 Fast Patrol Boat
 Pursuit Duties
 Fast assault craft
 Fast troop transfer
 High-speed air/sea rescue

Survey, oceanographic, hydrographic and geophysical operations
 Personnel Transfer and supply operations.

Disclaimer: The details of any vessel advertised on or by Fairways Marine Brokerage are given in good faith but cannot be guaranteed. The buyer should instruct his or her surveyors or agents to investigate the details and information supplied. All vessels advertised and/or offered by Fairways Marine Brokerage are offered subject to prior sale, prior charter, price change or withdrawal without notice.



Scirocco 50 – Patrol version, profile

(NB: this illustration is generic – please refer to drawing no T3HA000 for the 'as built' layout).

Principle Particulars:

Dimensions

Length Overall: 15.00 m

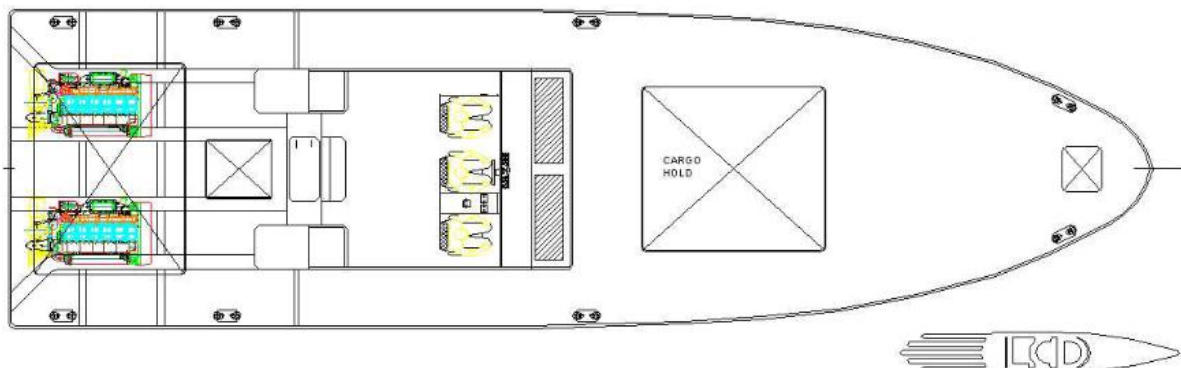
Beam: 4.20 m (4.00 without the rubbing strips - not fitted)

Draft max: 1.20 m

Fuel: 2,000 L, Diesel

Lightship Weight: 11,000 kg (depending on engines and drives)

Max laden weight: 18,000 kg



Scirocco 50 – Patrol version, plan

Propulsion

No propulsion fitted.



0044 (0)1273 508164
0044 (0)7710 112765
info@fairwaysmarinebrokerage.co.uk
www.fairwaysmarinebrokerage.co.uk

Performance

Top speed: 50 knots (with Yellowfin 700hp VSD3 drive packages)
Cruising Speed: 40 knots (with Yellowfin 700hp VSD3 drive packages)
Range: 400 Nm at 40 knots/18,000 kg

Construction

Hull

Hull and deck is built by GS-marine and is of an advanced sandwich construction featuring hand laid Devold AMT unidirectional multi-axial reinforcements over a high-grade 50 mm Divinycell core, providing a strong maintenance free structure.

Wheelhouse

Is custom built by VT Halmatic Ltd to Lloyds specification and is a progression of their 50 foot pilot boat wheelhouse design.

Equipment

Deck:

8 off S/S 250mm Open based mooring cleats
1 off S/S handrail
2 off S/S cockpit handrails
4 off Stranded polyamide 18mm rope (100m roll)*
8 off White fenders with rope (inflated)*
2 off Seaquip heavy-duty hatches
1 off Anchor compartment
1 off Electronic anchor windlass (900kg)
1 off 20kg Anchor with rope and chain
6 off Vetus ASV Louvered air suction vents
Navigational lights
Anti-slip paint
*may not be fitted

Wheelhouse:

3 off fully upholstered adjustable pilot seats with fitted armrest.
1 off chart/navigation table
1 off 6-seater bench with cushions
3 off Libero ventilation hatches*
2 off 5 kg extinguishers*
3 off Vetus RWS heavy-duty windscreen wipers
2 off Seaquip marine doors*
1 off louvered engine room air exhaust vent with trap
2 off hatches to mid compartment*
Interior lighting and navigational lighting
*may not be fitted or alternatives may be fitted

Disclaimer: The details of any vessel advertised on or by Fairways Marine Brokerage are given in good faith but cannot be guaranteed. The buyer should instruct his or her surveyors or agents to investigate the details and information supplied. All vessels advertised and/or offered by Fairways Marine Brokerage are offered subject to prior sale, prior charter, price change or withdrawal without notice.



0044 (0)1273 508164

0044 (0)7710 112765

info@fairwaysmarinebrokerage.co.uk

www.fairwaysmarinebrokerage.co.uk

Front compartment:

- 1 off Bilge pump 12v 4800L per hour
- 1 off Automatic bilge float switch
- 2 off interior lights

Mid compartment:

- 1 off Bilge pump 12v 4800L per hour
- 1 off Attwood automatic bilge float switch
- 1 off 2000L stainless fuel tank

Engine Compartment (may not all be fitted):

- 2 off Bilge pump 12v 4800L per hour
- 1 off Attwood automatic bilge float switch
- 1 off Fire extinguishing - auto system
- 4 off Fire extinguishing - manual
- 2 off Engine room hatches
- 3 off Kenlow 450w Engine room blowers
- 2 off Diesel fuel filter
- 2 off Fuel water separators
- 2 off 3" sea water strainers
- 2 off 3" bronze seawater intakes
- 2 off 3" bronze seacocks
- 2 off custom water injected exhaust systems
- 6 off interior lights
- 50 mm Fire/sound insulation